

Plug-in connection system PK-TS

CONTA-CON suitable for rail mounting

The plug-in type connection system **PK-TS** was designed to meet the ever increasing requirements in regards to both modularity and flexibility in switch cabinet and machinery production.

This system serves to facilitate to connect separately wired control board sections for integration into the allround installation. In this case, the wire between two control board sections is embedded in the **PK-TS** basic element of one of the sections whereas in the second section the according wires are embedded in the **PKB/PBT** counter section.

The **PK-TS** basic elements are mounted to the rail with catch feet, which are designed for individual assembly to the TS15, TS32 or TS35 DIN-mounting rails by means of a rail mount TS15/35 or TS32/35.

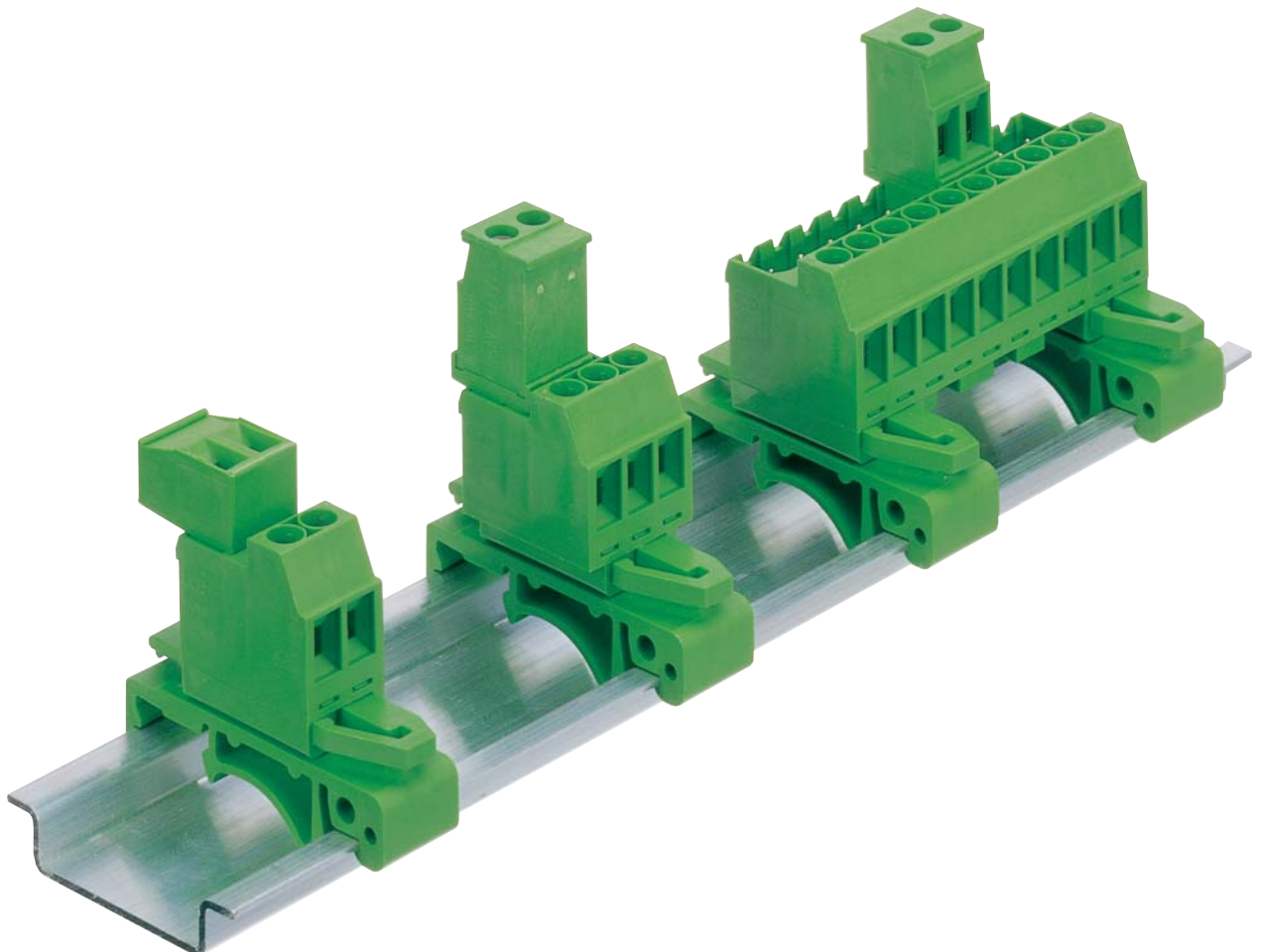
This permits both sections to be easily connected after installation of the switch cabinets. The type of connection technology (strain-relief-clamp or eccentric) is determined by the type of the plug-in connection element **PKB/PBT**.

The 2-24 pole **PK-TS** elements are also available with screwed flange. The **PK-TS** basic elements can be screwed to the corresponding plug-in connection element and are thus secured against unintentional loosening.

According to the type of the **PK-TS** and **PKB/ PBT** combinations, different connecting directions are possible (see RH).

When using several **PK-TS** and in order to prevent same from being incorrectly plugged in a control board section, **PKB/PBT** with their approved **CONTA-CON** coding system can be coded without loss of poles (cf. pages 122-123 for further details).

With respect to the wide range of marking possibilities please see pages 124 to 127 of this catalogue.



Plug-in connection system PK-TS

Connection Examples

PK-TS in combination within PKB 950

- . Entry fittings **PK-TS**:
horizontally, from the right
- . Entry fittings **PKB 950**:
vertically, from above



PK-TS in combination within PKB 1100

- . Entry fittings **PK-TS**:
horizontally, from the right
- . Entry fittings **PKB 1100**:
horizontally, from the left



PK-TS in combination within PKB 1110

- . Entry fittings **PK-TS**:
horizontally, from the right
- . Entry fittings **PKB 1110**:
horizontally, from the right

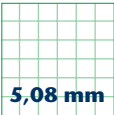


PK-TS in combination within PBT 1200

- . Entry fittings **PK-TS**:
horizontally, from the right
- . Entry fittings **PBT 1200**:
vertically, from above, screwed connection
also vertically, from above.

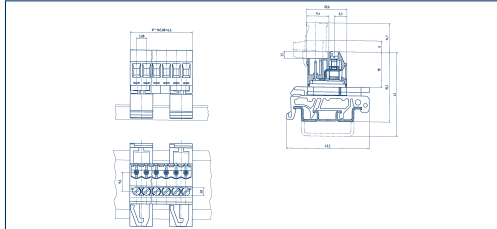


Plug-in connection system PK-TS

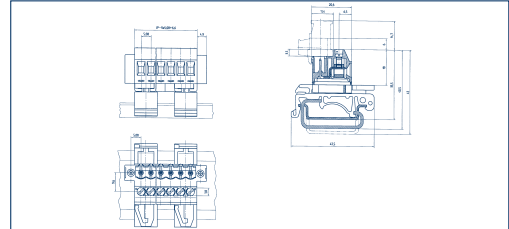


Drawings

PK-TS/... /5,08/15 TS15/TS35



PK-TS/... /5,08 TS32/TS35



Dimensions

Spacing mm
Insulation stripping length mm
PCB hole diameter mm
Dimensions (L x B x H)
TS15
TS32
TS35

5,08
6,00
-
(Pole x 5,08 + 6,6 mm) x 20,6 x 35,5 mm
-
(Pole x 5,08 + 6,6 mm) x 20,6 x 35,5 mm

5,08
6,00
-
-
(Pole x 5,08 + 6,6 mm) x 20,6 x 40,5 mm
(Pole x 5,08 + 6,6 mm) x 20,6 x 33,5 mm

Connection data

Single wire (solid) mm ²
Stranded wire (flexible) mm ²
Stranded wire (with ferrules) mm ²

2,50
2,50
2,50

2,50
2,50
2,50

Rating

Rated voltage V
Rated current A
Cross section max. AWG/mm ²
Rated surge voltage
Rated torque/Screw size
Contamination degree

300 V	250 V
15 A	12 A (T60)
28-12	2,50
-	4,00 kV
-	0,5 Nm/M3
-	3

300 V	250 V
15 A	12 A (T60)
28-12	2,50
-	4,00 kV
-	0,5 Nm/M3
-	3

Materials

Insulating material/Flammability class
Temperature Range
Clamping part
Clamping cage/Eccentric
Contact pin
Cage tension spring
Wire protection

PA 6.6 V0 / UL 94 V0
-30°C / +105°C
CuZn
-
Cu
-
-

PA 6.6 V0 / UL 94 V0
-30°C / +105°C
CuZn
-
Cu
-
-

Order information

Standard colour(s)
(further colours on request, see page 5)

No. of poles	Cat.-No.	Qty.p.pck.
	●	
	green	
	(Ral 6018)	
2	13175.1	50
3	13176.1	50
4	13177.1	50
5	13178.1	50
6	13179.1	50
7	13180.1	40
8	13181.1	35
9	13182.1	30
10	13183.1	20
11	13184.1	20
12	13185.1	20
13	13186.1	20
14	13187.1	20
15	13188.1	15
16	13189.1	15
17	13190.1	15
18	13191.1	15
19	13192.1	15
20	13193.1	10
21	13194.1	10
22	13195.1	10
23	13196.1	10
24	13197.1	10

No. of poles	Cat.-No.	Qty.p.pck.
	●	
	green	
	(Ral 6018)	
2	12319.1	50
3	12320.1	50
4	12321.1	50
5	12322.1	50
6	12323.1	50
7	12324.1	40
8	12325.1	35
9	12326.1	30
10	12327.1	20
11	12328.1	20
12	12329.1	20
13	12330.1	20
14	12331.1	20
15	12332.1	15
16	12333.1	15
17	12334.1	15
18	12335.1	15
19	12336.1	15
20	12337.1	10
21	12338.1	10
22	12339.1	10
23	12340.1	10
24	12341.1	10

Accessories

Marking
Coding

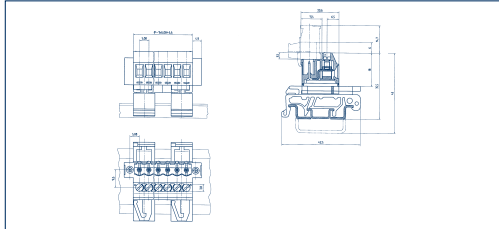
Page 126 - 129
Page 124 - 125

Page 126 - 129
Page 124 - 125

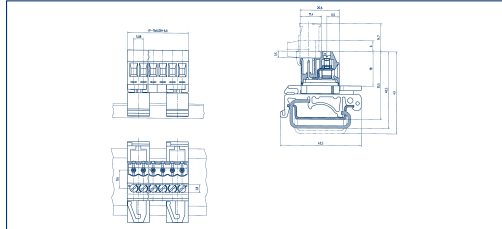
**Plug-in connection system
PK-TS**

5,08 mm

PK-TS/... /5,08-F/15 TS15/TS35



PK-TS/... /5,08-F TS32/TS35



Drawings

Dimensions

Insulation mm	5,08
Insulation stripping length mm	6,00
PCB hole diameter mm	-
Dimensions (L x B x H)	
TS15	(Pole x 5,08 + 6,6 mm) x 20,6 x 35,5 mm
TS32	-
TS35	(Pole x 5,08 + 6,6 mm) x 20,6 x 35,5 mm

Connection data

Single wire (solid) mm ²	2,50
Stranded wire (flexible) mm ²	2,50
Stranded wire (with ferrules) mm ²	2,50

Rating

Rated voltage V	300 V	250 V
Rated current A	15 A	12 A (T60)
Cross section max. AWG/mm ²	28-12	2,50
Rated surge voltage	-	4,00 kV
Rated torque/Screw size	-	0,5 Nm/M3
Contamination degree	-	3

Materials

Insulating material/Flammability class	PA 6.6 V0 / UL 94 V0
Temperature Range	-30°C / +105°C
Clamping part	CuZn
Clamping cage/Eccentric	-
Contact pin	Cu
Cage tension spring	-
Wire protection	-

Order information

	No. of poles	Cat.-No.	Qty.p.pck.
Standard colour(s)		● green	
(further colours on request, see page 5)		(Ral 6018)	
	2	13825.1	50
	3	13826.1	50
	4	13827.1	50
	5	13828.1	50
	6	13829.1	50
	7	13830.1	40
	8	13831.1	35
	9	13832.1	30
	10	13833.1	20
	11	13834.1	20
	12	13835.1	20
	13	13836.1	20
	14	13837.1	20
	15	13838.1	15
	16	13839.1	15
	17	13840.1	15
	18	13841.1	15
	19	13842.1	15
	20	13843.1	10
	21	13844.1	10
	22	13845.1	10
	23	13846.1	10
	24	13847.1	10

Accessories

Marking	Page 126 - 129
Coding	Page 124 - 125

Insulation mm	5,08
Insulation stripping length mm	6,00
PCB hole diameter mm	-
Dimensions (L x B x H)	
TS32	(Pole x 5,08 + 6,6 mm) x 20,6 x 40,5 mm
TS35	(Pole x 5,08 + 6,6 mm) x 20,6 x 35,5 mm

Single wire (solid) mm ²	2,50
Stranded wire (flexible) mm ²	2,50
Stranded wire (with ferrules) mm ²	2,50

Rated voltage V	300 V	250 V
Rated current A	15 A	12 A (T60)
Cross section max. AWG/mm ²	28-12	2,50
Rated surge voltage	-	4,00 kV
Rated torque/Screw size	-	0,5 Nm/M3
Contamination degree	-	3

Insulating material/Flammability class	PA 6.6 V0 / UL 94 V0
Temperature Range	-30°C / +105°C
Clamping part	CuZn
Clamping cage/Eccentric	-
Contact pin	Cu
Cage tension spring	-
Wire protection	-

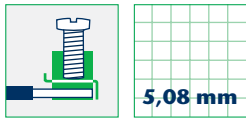
	No. of poles	Cat.-No.	Qty.p.pck.
Standard colour(s)		● green	
(further colours on request, see page 5)		(Ral 6018)	
	2	13848.1	50
	3	13849.1	50
	4	13850.1	50
	5	13851.1	50
	6	13852.1	50
	7	13853.1	40
	8	13854.1	35
	9	13855.1	30
	10	13856.1	20
	11	13857.1	20
	12	13858.1	20
	13	13859.1	20
	14	13860.1	20
	15	13861.1	15
	16	13862.1	15
	17	13863.1	15
	18	13864.1	15
	19	13865.1	15
	20	13866.1	10
	21	13867.1	10
	22	13868.1	10
	23	13869.1	10
	24	13870.1	10

Marking	Page 126 - 129
Coding	Page 124 - 125

Plug-in connection system

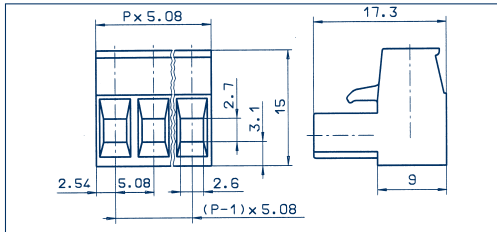
PK-TS Connector

Connector for:
PK-TS/... /5,08/15
PK-TS/... /5,08

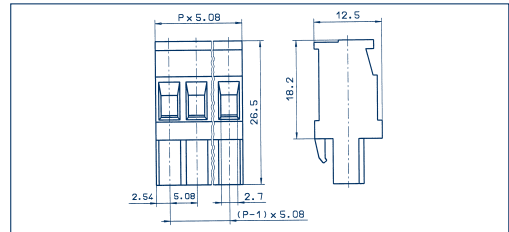


Drawings

PKB 950/... /5,08



PKB 1100/... /5,08



Connection principle

Dimensions

Spacing mm
 Insulation stripping length mm
 PCB hole diameter mm

Connection data

Single wire (solid) mm²
 Stranded wire (flexible) mm²
 Stranded wire (with ferrules) mm²

Rating

Rated voltage V
 Rated current A
 Cross section max. AWG/mm²
 Rated surge voltage
 Rated torque/Screw size
 Contamination degree

Strain-relief-clip

5,08
 6,00



300 V

15 A

22-12

—

—

—

—



250 V

12 A (T60)

2,50

4,00 kV

0,50 Nm/M3

3

Strain-relief-clip

5,08
 7,00



300 V

15 A

22-10

—

—

—



250 V

12 A (T60)

2,50

4,00 kV

0,50 Nm/M3

3

Materials

Insulating material/Flammability class
 Temperature Range
 Clamping part
 Clamping cage/Eccentric
 Contact pin
 Cage tension spring
 Wire protection
 Soldering lug
 Contact Spring

PA 6.6 V0 / UL 94 V0
 -30°C / +105°C
 CuZn
 —
 —
 —
 —
 —
 —
 CuSn

PA 6.6 V0 / UL 94 V0
 -30°C / +105°C
 CuZn
 —
 —
 —
 —
 —
 —
 CuSn

Order information

Standard colour(s)
 (further colours on request, see page 5)

No. of poles	Cat.-No.	Qty.p.pck.
	● green (Ral 6018)	
2	11230.1	50
3	11231.1	50
4	11232.1	50
5	11233.1	50
6	11234.1	50
7	11235.1	50
8	11236.1	50
9	11237.1	50
10	11238.1	50
11	11239.1	50
12	11240.1	50
13	11241.1	50
14	11242.1	50
15	11243.1	50
16	11244.1	50
17	11245.1	50
18	11246.1	50
19	11247.1	50
20	11248.1	50
21	11249.1	50
22	11250.1	50
23	11251.1	50
24	11252.1	50

No. of poles	Cat.-No.	Qty.p.pck.
	● green (Ral 6018)	
2	11305.1	50
3	11306.1	50
4	11307.1	50
5	11308.1	50
6	11309.1	50
7	11310.1	50
8	11311.1	50
9	11312.1	50
10	11313.1	50
11	11314.1	50
12	11315.1	50
13	11316.1	50
14	11317.1	50
15	11318.1	50
16	11319.1	50

Accessories

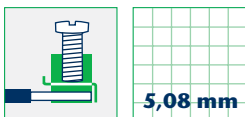
Marking Page 126 - 129
 Coding Page 124 - 125

Page 126 - 129
 Page 124 - 125

Plug-in connection system

PK-TS Connector

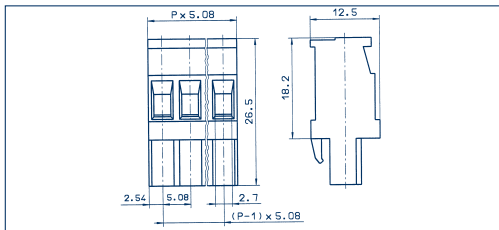
Connector for:
PK-TS/.../5,08/15 or
PK-TS/.../5,08-F/15
PK-TS/.../5,08 or
PK-TS/.../5,08-F



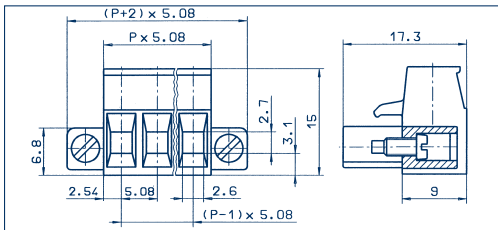
5,08 mm

Drawings

PKB 1110/.../5,08



PKB 950/.../5,08-F



Connection principle

Dimensions

Spacing mm
 Insulation stripping length mm
 PCB hole diameter mm

Connection data

Single wire (solid) mm²
 Stranded wire (flexible) mm²
 Stranded wire (with ferrules) mm²

Rating

Rated voltage V
 Rated current A
 Cross section max. AWG/mm²
 Rated surge voltage
 Rated torque/Screw size
 Contamination degree

Materials

Insulating material/Flammability class
 Temperature Range
 Clamping part
 Clamping cage/Eccentric
 Contact pin
 Cage tension spring
 Wire protection
 Soldering lug
 Contact Spring

Order information

Standard colour(s)
 (further colours on request, see page 5)

Strain-relief-clamp

5,08

7,00

–

2,50

2,50

2,50



300 V

15 A

22-10

–

–

–



250 V

12 A (T60)

2,50

4,00 kV

0,50 Nm/M3

3

Strain-relief-clamp

5,08

6,00

–

2,50

2,50

2,50



300 V

15 A

22-12

–

–

–



250 V

12 A (T60)

2,50

4,00 kV

0,50 Nm/M3

3

PA 6.6 V0 / UL 94 V0

-30°C / +105°C

CuZn

–

–

–

–

–

CuSn

PA 6.6 V0 / UL 94 V0

-30°C / +105°C

CuZn

–

–

–

–

–

CuSn

No. of poles

Cat.-No.

Qty.p.pck.

No. of poles

Cat.-No.

Qty.p.pck.

●

green

(Ral 6018)

2

11339.1

50

3

11340.1

50

4

11341.1

50

5

11342.1

50

6

11343.1

50

7

11344.1

50

8

11345.1

50

9

11346.1

50

10

11347.1

50

11

11348.1

50

12

11349.1

50

13

11350.1

50

14

11351.1

50

15

11352.1

50

16

11353.1

50

Accessories

Marking

Page 126 - 129

Coding

Page 124 - 125

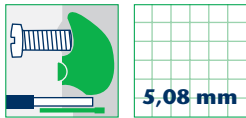
Page 126 - 129

Page 124 - 125

Plug-in connection system

PK-TS Connector

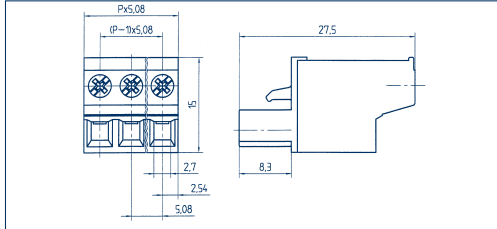
Connector for:
PK-TS/... /5,08/15
PK-TS/... /5,08



PBT 1200/... /5,08



Drawings



Connection principle

Dimensions

Spacing mm
 Insulation stripping length mm
 PCB hole diameter mm

Connection data

Single wire (solid) mm²
 Stranded wire (flexible) mm²
 Stranded wire (with ferrules) mm²

Rating

Rated voltage V
 Rated current A
 Cross section max. AWG/mm²
 Rated surge voltage
 Rated torque/Screw size
 Contamination degree

Materials

Insulating material/Flammability class
 Temperature Range
 Clamping part
 Clamping cage/Eccentric
 Contact pin
 Cage tension spring
 Wire protection
 Soldering lug
 Contact Spring

Order information

Standard colour(s)
 (further colours on request, see page 5)

Eccentric-top

5,08
 10,00
 -
 2,50
 2,50
 2,50



300 V

15 A

22-12

-

-

-



250 V

12 A (T60)

2,50

4,00 kV

0,50 Nm/M2,5

3

PA 6.6 V0 / UL 94 V0
 -30 °C / +105 °C

-
 Fe/Fe
 -
 -
 -
 -

CuSn

No. of poles	Cat.-No.	Qty.p.pck.
	●	
	green	
	(Ral 6018)	
2	11354.1	50
3	11355.1	50
4	11356.1	50
5	11357.1	50
6	11358.1	50
7	11359.1	50
8	11360.1	50
9	11361.1	50
10	11362.1	50
11	11363.1	50
12	11364.1	50
13	11365.1	50
14	11366.1	50
15	11367.1	50
16	11368.1	50
17	11369.1	50
18	11370.1	50
19	11371.1	50
20	11372.1	50
21	11373.1	50
22	11374.1	50
23	11375.1	50
24	11376.1	50

Accessories

Marking Page 126 - 129
 Coding Page 124 - 125